



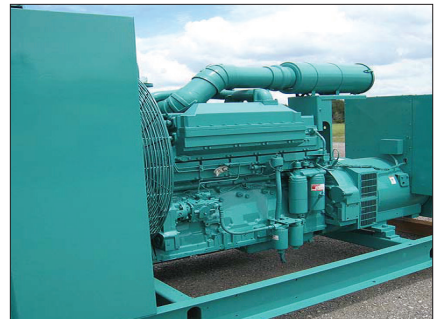
ENGINE PARTS FOR CUMMINS™ NATURAL GAS KT19

IPD has expanded our Cummins Natural Gas KT19 product offerings to include valvetrain components!



For many years IPD has offered the Cummins Natural Gas KT19 gas piston kit and engine overhaul kit. We are excited that we have expanded our offering to include new valvetrain components. These natural gas engine components use the highest quality aluminum for maximum performance and gas compression. The Cummins KT19 natural gas piston is just one of many engine parts IPD offers made specifically for the natural gas industry. Other parts included in this engine overhaul kit include:

- Manganese phosphate-coated cylinder liner for the ultimate protection from corrosion, erosion, and cavitation damage.
- Keystone top compression piston ring with chrome-plated wear surface and phosphate coating for ultimate durability
- Precision tension two-piece oil control ring with chrome-plated contact surfaces
- CNC-machined aluminum piston with graphite skirt coating and Ni-resist ring groove insert.
- The KT19 valvetrain components feature a shot-peened exhaust valve to ensure superior strength.
- Both intake and exhaust valves have induction-hardened tips.
- The exhaust valve seat (face) features a cobalt-chromium alloy hardface for ultimate high temperature wear resistance.



Drilling and gas compression companies worldwide trust IPD engine parts to provide cost effective reliability, quality, and durability to their operations.

KOF5238/91KTG – Out of Frame kit

Item #	Item Description	Kit Number	Qty/Kit
4955238	PISTON KIT, NATURAL GAS	KOF5238/91KTG	6
2881745	RING SET	KOF5238/91KTG	6
4024767	CYLINDER LINER KIT	KOF5238/91KTG	6
AR12270	MAIN BEARING, STD, SET,WITH THRUST WASHERS	KOF5238/91KTG	1
205840	CON ROD BEARING STD	KOF5238/91KTG	12
4352573	GASKET SET, UPPER NATURAL GAS 34	KOF5238/91KTG	1
4089391	GASKET SET, LOWER 48	KOF5238/91KTG	1

Valve Train Components

Item #	Item Description	Notes
2881944	VALVE KIT, EXHAUST	(Contains 4922155 VALVE, EXHAUST (1) & 205091 VALVE LOCK (2))
3803518	VALVE KIT, INTAKE	(Contains 3052820 VALVE, INTAKE (1) & 205091 VALVE LOCK (2))
4099095	VALVE STEM GUIDE, EXHAUST	
4099096	VALVE STEM GUIDE, INTAKE	
4090182	VALVE INSERT, EXHAUST	
3086193	VALVE INSERT, INTAKE	
4099092	VALVE STEM SEAL, INTAKE	
4099093	VALVE STEM SEAL, EXHAUST	
3643725	VALVE SPRING (INTAKE & EXHAUST)	
205094	VALVE SPRING RETAINER (INTAKE & EXHAUST)	
3640315	ROTOCOIL (INTAKE & EXHAUST)	

Parts available for oil and gas industry	
CATERPILLAR®	3304/3306/3408/3412/3508/3512/3516/3600/C12/C15/C18/C27/C32
CUMMINS®	K Series (19L/38L/50L)
WAUKESHA®	VHP Series (7042/7044)

IPD WARRANTY FOR NATURAL GAS OR METHANE ENGINES
 IPD quality parts are backed by an industry-leading
 2-years/unlimited hours of operation on IPD parts except
 valvetrain (warranted for 1 year/unlimited hours).



IPD
 1550 Charles Willard Street,
 Carson CA 90746 USA
 +1.310.530.1900
 ISO 9001: 2015 Certified
ipdparts.com

MKTIPDKT19