



## IPD TECHNICAL BULLETIN

July 2011

IPDTB-0027

### ***IPD Technical Bulletin:***

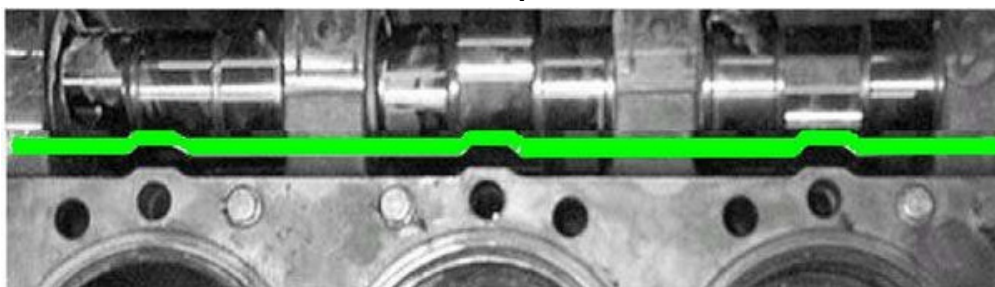
### **HOW TO DETERMINE THE CORRECT CYLINDER HEAD GASKET FOR C10 & C12 ENGINES**

An engine serial and arrangement number can only indicate the “original” cylinder head gasket with which the engine was assembled; however, it may not indicate the correct head gasket to use for a repair procedure. When cylinder heads or blocks are exchanged, the design of the replacement castings may require a different head gasket.

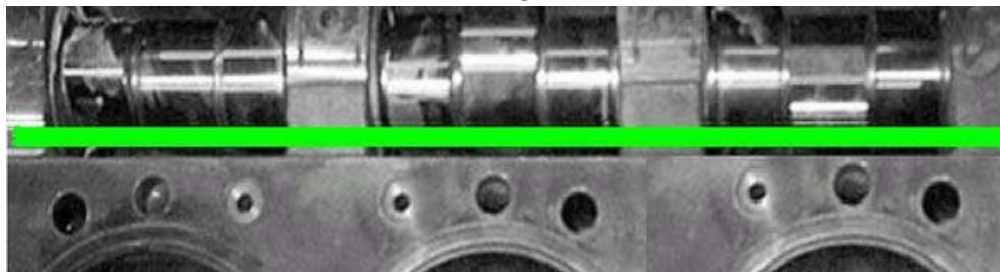
There are two types of head gaskets, cylinder blocks, and cylinder heads that must be identified to confirm the correct cylinder head gasket. The two types are commonly referred to as “**Scalloped**” or “**Straight**”, which describe the profile on these components along the camshaft-side edge.

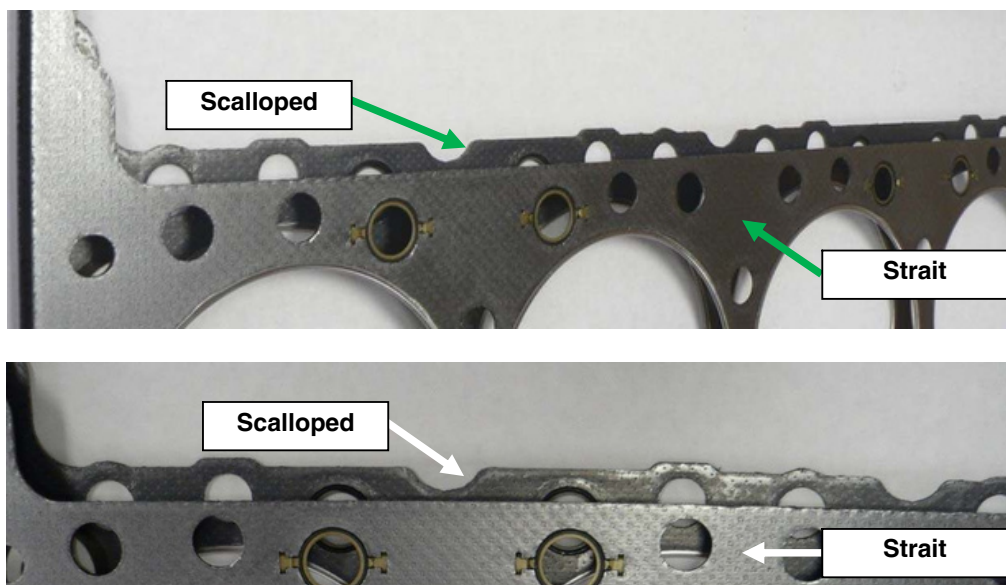
The photos below show the deck surface of the two cylinder block designs. The green line shows the edge profiles of the cylinder blocks.

**Scalloped**



**Straight**





You must identify the cylinder block and cylinder head designs to determine the required head gasket. A “Straight” design head gasket should be used if both castings are the “Straight” design. A “Scalloped” design head gasket should be used if **either or both** of the castings are “Scalloped” (i.e., anytime a “Scalloped” casting is used, a “Scalloped” head gasket is the correct gasket).

<u>Cylinder Block</u>	<u>Cylinder Head</u>	<u>Gasket</u>
Straight	Straight	Straight
Straight	Scalloped	Scalloped
Scalloped	Straight	Scalloped
Scalloped	Scalloped	Scalloped

The following chart identifies some of the cylinder block and cylinder head numbers.

<u>Cylinder Block Number</u>	<u>Design</u>	<u>Cylinder Head Number</u>	<u>Design</u>
1280406	Scalloped	4P6510	Scalloped
2002055	Straight	1799461	Straight
2002054	Straight	1620683	Straight
1620681	Straight		

IPD □ Torrance, CA 90501 USA □ ([www.ipdparts.com](http://www.ipdparts.com))

All information is believed to be accurate at time of printing. No guarantee of accuracy is made by IPD. Please consult your service and parts manual for detailed information. This is intended as a warning only, not a specification.

All manufacturers' names, numbers, symbols and descriptions are for reference only. It is not implied that any part is the product of the manufacturer. Caterpillar® and Cat® are registered trademarks of Caterpillar, Inc. Detroit Diesel® is a registered trademark of Detroit Diesel Corporation. Cummins® is a registered trademark of Cummins Engine Company.